

FOR
HIGH
PER
FORMANCE

TAIWAN **///KT**

2020 **OEM**
Catalogue





We extend to all our clients, old and new, our warmest thanks and best wishes on the occasion of our 72th anniversary. The new catalog clearly demonstrates how far the industry has changed over the years and how Kun Teng have been in the vanguard of research and development.

Established in 1947, Kun Teng today is Taiwan's largest hub and coaster-brake manufacturer, with an "A-Class" Quality Control rating from the government and an increasing reputation worldwide for reliability. Our factory at Taya, near Taichung, operates up-to-date Sakamura BPF-580KT cold-forging machines, automatic lathes and conveyers, high-speed, precision, multipurpose punching machines, CNC lathes and threading machines, and electroplating equipment.

Our R&D work continues to concentrate on the improved function of our cassette hubs. Our coaster-brakes meet American Consumer Foundation standard requirement (CPSC,USA), test-approved by (DIN) in November 1996, and we are already approved the ISO-9001 certificate.. We hope, through sustained efforts, to promote our product range in both the OEM and dealer markets, while expanding our range of services.

Anti Bite

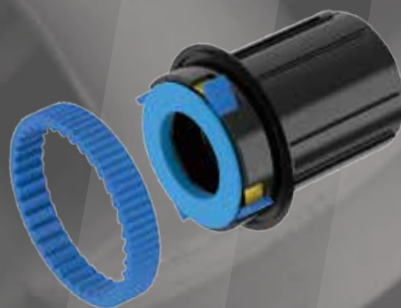
Press-fit Cr-Mo plate into Alloy cassette body prevent from free wheel bite into.

- 6 Pawl 102T
- 4 Pawl 4 Spring
- 3 Pawl 3 Spring



Spline (For E-Bike)

High torque Spline press-fit ratchet ring for E-bike.





Index

E-Bike & Boost _ 03

E-Bike & MTB_ 04

Boost _ 05

MTB_ 06

Road Disc_ 07

Road_ 08

Dynamo System_ 09

Through Axle Dynamo Hub_ 10

One Piece wheel_ 11

Inter-3 Rear Hub_ 12

E-Bike / Boost

Front IDØ15 x 110mm / Rear IDØ12 x 148mm

QL-XK8F

Weight: 182g

Option: Center Lock: **QL-XC8F**

Converter end cap from ID5.2mm, ID15mm

Sealed Cartridge Bearings (SB): [2pcs](#)



QL-BX8F

Weight: 286g

Option: Center Lock: **QL-BC8F**

Axle Dim: IDØ15 x 110mm only

Bearings: [Loose Balls](#)



QL-XK8R 11sp

Weight: 448g

Option: Center Lock: **QL-XC8R**

Freehub Body: Cr-Mo threaded type 3 pawls x 1 spring

Sealed Cartridge Bearings (SB): [2pcs](#)



QL-BX8R 11sp

Weight: 470g

Option: Center Lock: **QL-BC8R**

Freehub Body: Cr-Mo threaded type 3 pawls x 1 spring
w/ Shimano 10sp cassette

Axle Dim: IDØ12 x 148mm only

Bearings: [Loose Balls](#)



QL-2H2MR 11sp

Weight: 450g

Option: IS6 with sram **QL-2H2XR**

Center Lock with shimano **QL-2H3MR**

Center Lock with Sram **QL-2H3XR**

Freehub Body: Cr-Mo 3 pawls x 1 spring
w/ Shimano 11sp cassette

Axle Dim.: IDØ12x148mm

Sealed Bearings (SB): [4pcs](#)



Front IDØ15 x 100mm / Rear IDØ12 x 142mm

MTB-DISC



QL-XK2F

Weight: 173g



Option: Center Lock: **QL-XC2F**

Converter end cap from ID5.2mm, ID15mm

Sealed Bearings (SB): 2pcs



QL-BX4F

Weight: 305g



Option: Center Lock: **QL-BC4F**

Axle Dim: IDØ15 x 100mm only

Bearings: Loose Balls



QL-XK2R 11sp

Weight: 436g



Option: Center Lock: **QL-XC2R**

W/O CNC Disc IDØ5.2x135x145mm

Only: **QL-SX4R**

Freehub Body: Cr-Mo threaded type 3 pawls x 1 spring

Sealed Bearings (SB): 2pcs



QL-BX4R 11sp

Weight: 483g



Option: Center Lock: **QL-BC4R**

Freehub Body: Cr-Mo threaded type 3 pawls x 1 spring
w/ Shimano 10sp cassette

Axle Dim: IDØ12 x 142mm only

Bearings: Loose Balls



QL-2H1MR 11sp

Weight: 446g



Option: IS6 with sram **QL-2H1XR**

Center Lock with shimano **QL-2HCMR**

Center Lock with Sram **QL-2HCXR**

Freehub Body: Cr-Mo 3 pawls x 1 spring
w/ Shimano 11sp cassette

Axle Dim.: IDØ12x142mm

Sealed Bearings (SB): 4pcs

Boost

Front IDØ15 x 110mm / Rear IDØ12 x 148mm



QL-XK8F

Weight: 182g

Option: Center Lock: **QL-XC8F**

Converter end cap from ID5.2mm, ID15mm

Sealed Cartridge Bearings (SB): [2pcs](#)



QL-BX8F

Weight: 286g

Option: Center Lock: **QL-BC8F**

Axle Dim: IDØ15 x 110mm only

Bearings: [Loose Balls](#)



QL-XK8R 11sp

Weight: 448g

Option: Center Lock: **QL-XC8R**

Freehub Body: Cr-Mo threaded type 3 pawls x 1 spring

Sealed Cartridge Bearings (SB): [2pcs](#)



QL-BX8R 11sp

Weight: 470g

Option: Center Lock: **QL-BC8R**

Freehub Body: Cr-Mo threaded type 3 pawls x 1 spring w/ Shimano 10sp cassette

Axle Dim: IDØ12 x 148mm only

Bearings: [Loose Balls](#)



QL-4K8XR 11sp

Weight: 299g

Option: IS6 with Shimano: **QL-4K8MR**

Center Lock with Shimano: **QL-4H8MR**

Center Lock with Sram: **QL-4H8XR**

Freehub Body: AL7075 4 pawls x 4 springs

Sealed Bearings (SB): [4pcs](#)



Front IDØ15 x 100mm / Rear IDØ12 x 142mm

MTB-DISC



QL-XK2F

Weight: 173g



Option: Center Lock: **QL-XC2F**

Converter end cap from ID5.2mm, ID15mm

Sealed Bearings (SB): 2pcs



QL-BX4F

Weight: 305g



Option: Center Lock: **QL-BC4F**

Axle Dim: IDØ15 x 100mm only

Bearings: Loose Balls



QL-XK2R 11sp

Weight: 436g



Option: Center Lock: **QL-XC2R**

W/O CNC Disc IDØ5.2x135x145mm

Only: **QL-SX4R**

Freehub Body: Cr-Mo threaded type 3 pawls x 1 spring

Sealed Bearings (SB): 2pcs



QL-BX4R 11sp

Weight: 483g



Option: Center Lock: **QL-BC4R**

Freehub Body: Cr-Mo threaded type 3 pawls x 1 spring
w/ Shimano 10sp cassette

Axle Dim: IDØ12 x 142mm only

Bearings: Loose Balls



QL-4K4MR 11sp

Weight: 300g



Option: Center Lock with Shimano: **QL-4HCMR**

IS6 with Sram: **QL-4K4XR**

Center Lock with Sram: **QL-4HCXR**

Freehub Body: AL7075 4 pawls x 4 springs

Sealed Cartridge Bearings (SB): 4pcs

Road Disc

Front IDØ12 x 100mm / Rear IDØ12 x 135/142mm



QL-SL1F

Weight: 148g

Option: IS6 Same Flange: **QL-SL2F**

Sealed Bearings (SB): [2pcs](#)



QL-X2CR 11sp

Weight: 418g

Option: IS6 with **QL-XD2R**

Freehub Body: Cr-Mo threaded type 3 pawls x 1 spring

Sealed Bearings (SB): [2pcs](#)



QL-4VBMR 11sp

Weight: 268g

Option: IS6 with Shimano: **QL-4VDMR**

Center Lock with Sram XDR: **QL-4VDDR**

IS6 with Sram XDR: **QL-4VBDR**

Freehub Body: AL7075 4 pawls x 4 springs

Sealed Cartridge Bearings (SB): [4pcs](#)



Front IDØ5 x 100 x 108mm / Rear IDØ5 x 130 x 140mm



QL-2VDF

Weight: 74g

Sealed Cartridge Bearings (SB): [2pcs](#)



QL-GN1F

Weight: 127g

Sealed Cartridge Bearings(SB): [2pcs](#)



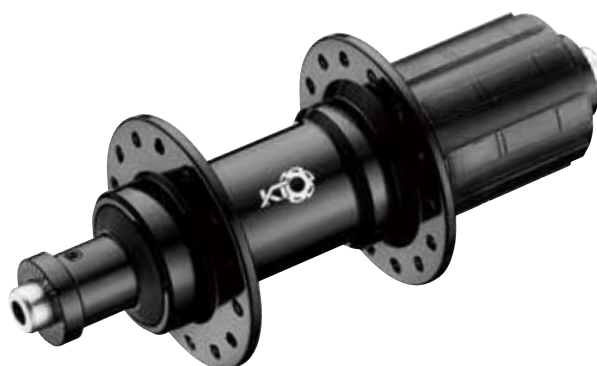
QL-2VDMR 11sp

Weight: 232g

Option: Campy: **QL-2VDCR**

Freehub Body: AL7075 3 pawls x 1 spring

Sealed Cartridge Bearings (SB): [4pcs](#)



QL-GN1R 11sp

Weight: 340g

Freehub Body: Cr-Mo splined type 3 pawls

Sealed Cartridge Bearings(SB): [2pcs](#)



QL-4V7MR 11sp

Weight: 248g

Option: Campy: **QL-4V7CR**

Freehub Body: AL7075 4 pawls x 4 springs

Sealed Cartridge Bearings (SB): [4pcs](#)



Dynamo System

JH-KC2F

Weight: 493g

Brake Type: Center Lock

Sealed Cartridge Bearings (SB): [2pcs](#)



JH-KD2F

Weight: 522g

Brake Type: Disc Brake

Sealed Cartridge Bearings (SB): [2pcs](#)



JH-KV2F

Weight: 483g

Brake Type: V-Brake

Sealed Cartridge Bearings (SB): [2pcs](#)



~ K 1280

AC-6V3W

Kx6 Series / QR Dynamo Hub system Kx5 Series / Thru Axle 15 & 12mm Dynamo Hub System

With our best craft and technology for generators and the use of a simple, natural but powerful oak-barrel-like exterior with the inclusion of a delicate and high quality spirit, we have innovated the concept of making our Dynamo Hub a smooth and streamlined appearance with a touch of metropolitanism. The QR Dynamo System is applied to all specifications of bicycles.



Through Axle Dynamo Hub



JH-KD5F

Weight: 453g

Brake type: Disc Brake

Sealed Cartridge Bearings (SB): [2pcs](#)



JH-KC5F

Weight: 446g

Brake type: Center Lock

Sealed Cartridge Bearings (SB): [2pcs](#)



Boost 4in1



IDØ15mm & Ø12mm

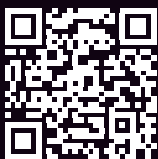
IDØ5.2mm

CONVERTER KIT

for MTB front hub OLD
100mm to 110mm
(Boost)



SPECIALLY MADE FOR EASY ASSEMBLING.



ONE-PIECE WHEEL

Bike-sharing & Rental bikes

KT's patented One-Piece Wheel, features a revolutionary innovation in hub technology. Working with KT's Inter-Gear 3-Speed Hub or Dynamo Hub, installation is seamless, tool-free and takes just moments to ensure a connection that is 10 times stronger than ever before. Insert the hub into the wheel, then fasten the lock ring to ensure a secure fit.



Inter gear 3 speed

FR-H33R

Weight: 880g



Dynamo Hub



Wheel

INTER-3 REAR HUB

The proliferation of bicycle commuters and the associated bike-sharing programs, have resulted in an upturn in demand for the various components specifically designed for the commuter bicycle market. None more so than high quality, performance-focused internal-gear hub systems.



FR-H13R

Brake Type: Disc-Brake
Weight: 1080g
O.L.D: 135mm



FR-H23R

Brake Type: Drum-Brake / V-Brake
Weight: 972g
O.L.D: 120mm

