

FOR THE
ADVANCE
PERFORMANCE

TAIWAN **IKT**

2020 **After market**
Catalogue

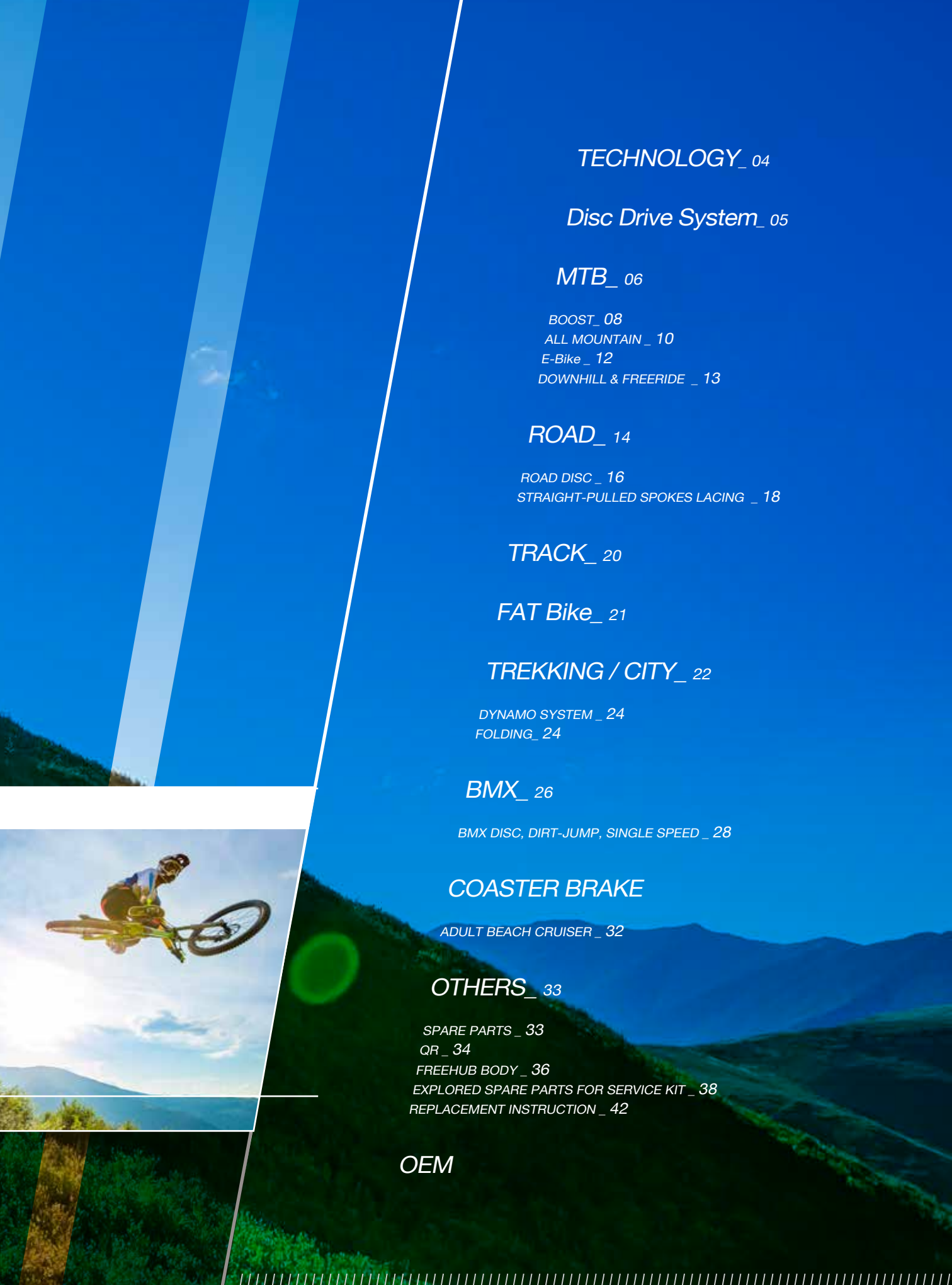




TAIWAN **IKT**
KUN TENG INDUSTRY CO., LTD.

269 Sec.3 Ming Sheng Rd., Taya Zone,
Taichung 42844, Taiwan
Tel: +886-(0)4-25661311 / Fax: +886-(0)4-25667555
kttw@q-lai.com.tw / www.kttw-hub.com





TECHNOLOGY_ 04

Disc Drive System_ 05

MTB_ 06

BOOST_ 08

ALL MOUNTAIN_ 10

E-Bike_ 12

DOWNHILL & FREERIDE _ 13

ROAD_ 14

ROAD DISC _ 16

STRAIGHT-PULLED SPOKES LACING _ 18

TRACK_ 20

FAT Bike_ 21

TREKKING / CITY_ 22

DYNAMO SYSTEM _ 24

FOLDING_ 24

BMX_ 26

BMX DISC, DIRT-JUMP, SINGLE SPEED _ 28

COASTER BRAKE

ADULT BEACH CRUISER _ 32

OTHERS_ 33

SPARE PARTS _ 33

QR_ 34

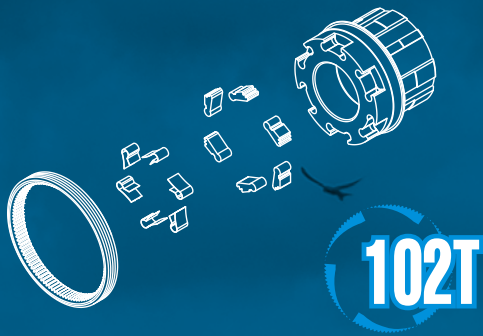
FREEHUB BODY_ 36

EXPLORED SPARE PARTS FOR SERVICE KIT _ 38

REPLACEMENT INSTRUCTION _ 42

OEM

The most popular hub for all MTB system



6 PAWLS 18 CLICKS SYSTEM

6 pawls, 6 springs & 102 tooth.

AL7075 or Cr-Mo freehub body compatible w/Shimano 11sp cassette / SRAM XX1.

BMX one-piece driver, optional for 8T, 9T, 10T, 11T 1/8" & 3/32".
DH, MTB, BOOST...

PATENT NO.

TW 1252815
US 7121394B2
DE 202005000114.7
NL 1030207
CN 201031894Y
DE 202007005699.0

TECHNOLOGIES

X-12

For Rear Hub

Compatible with 12mm Thru axle.
Only change end cap to fit.

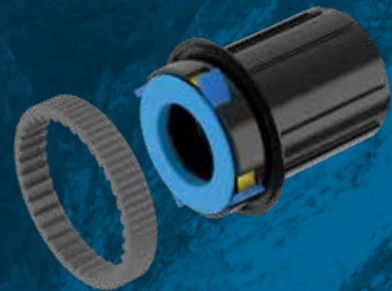


- 10mm Thru axle: 135mm
- 12mm Thru axle: 135mm / 142mm

TECHNOLOGIES FOR E-BIKE SELECTION

Spline (For E-Bike)

High torque Spline press-fit ratchet ring for E-bike.



TECHNOLOGIES

4 in 1

For Front Hub

Converter end cap from ID5.2 to ID9,
ID12mm, 15mm, 4 in 1 exchangeable



TECHNOLOGIES

TECHNOLOGIES FOR MTB SELECTION



Only change cassette body.

- 6 Pawl 102T
- 4 Pawl 4 Spring

Anti Bite

Press-fit Cr-Mo plate into Alloy cassette body prevent from free wheel bite into.

- 6 Pawl 102T
- 4 Pawl 4 Spring
- 3 Pawl 3 Spring





QL-DD4MR

Spoke Hole: 14G/ 28, 32, 36

Axle System: 12mm Thru axle x142mm,
12mm Thru axle x148mm,

Axle Material: AL-7075

Flange PCD: 58mm

Sealed Bearing: 4pcs

Freehub Body: Star Ratchet

Option: IS6 with Sram XD driver: **QL-DD4XR** (142mm)

IS6 with Shimano driver: **QL-DD8MR** (148mm)

IS6 with Sram XD driver: **QL-DD8XR** (148mm)

Center Lock with Shimano: **QL-DC4MR** (142mm)

Center Lock with Sram: **QL-DC4XR** (142mm)

Center Lock with Shimano: **QL-DC8MR** (148mm)

Center Lock with Sram: **QL-DC8XR** (148mm)

Boost X-12





102T **X-12** **4**in**1** **ONE HUB ALL SOLUTION**

From the perfect hubs to product durability, we have set benchmarks to ensure all our products undergo necessary quality tests and are performed under world's fastest riders.

With the cutting edge technology we apply to manufacture our cycling products. We hope the riders experience the best riding efficiency through their rides every day, day in and day out.



MTB

BOOST / MTB / DH



QL-4EAF

Spoke Hole: 14G/24, 28

Axle System: 15mm Thru axle

Built-in Dimension: 110mm

Flange PCD: 37

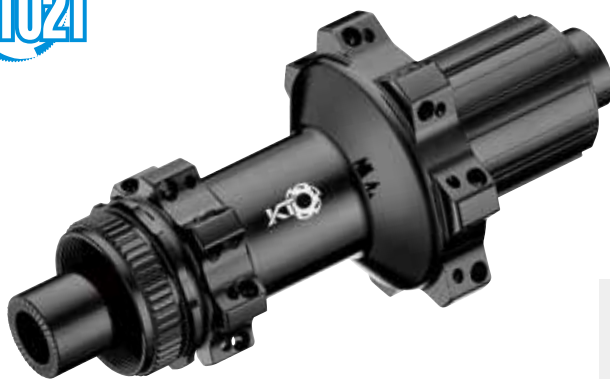
Sealed Cartridge Bearings(SB): 2pcs

Weight: 130g

Option: IS6: **QL-4EDF**

Boost 4 in 1

102T



QL-YMDMR

Spoke Hole: 14G/24, 28

Axle System: 12mm Thru axle

Built-in Dimension: 148mm

Flange PCD: R: 59.8mm, L: 39mm

Sealed Cartridge Bearings(SB): 4pcs

Weight: 296g

Freehub Body: AL7075 6 pawls 6 springs

Option: IS6: **QL-YMHMR** (Shimano)

IS6: **QL-YMHXR** (Sram)

Center Lock: **QL-YMDXR** (Sram)

Boost X-12





QL-S3BF

Spoke Hole: 14G/32, 36
Axle System: 15mm Thru axle
Built-in Dimension: 110mm
Axle Material: AL7075
Flange PCD: 58mm
Sealed Cartridge Bearings(SB): 2pcs
Weight: 152g
Option: IS6: **QL-S36F**

Boost 4in1



QL-Y42MR

Spoke Hole: 14G/32, 36
Axle System: 12mm Thru axle
Built-in Dimension: 148mm
Axle Material: AL7075
Flange PCD: 58mm / 64mm
Sealed Cartridge Bearings(SB): 4pcs
Weight: 315g
Freehub Body: AL7075 6 pawls 6 springs, compatible w/ Shimano or Sram 11sp cassette
Option: Center Lock: **QL-Y42XR** (Sram XD)
 IS6: **QL-Y72XR** (Sram)
 IS6: **QL-Y72MR** (Shimano)



QL-4ABXR

Spoke Hole: 14G/28, 32, 36
Axle System: 12mm Thru axle
Built-in Dimension: 148mm
Axle Material: AL7075
Flange PCD: 58mm
Sealed Cartridge Bearings(SB): 4pcs
Weight: 295g
Freehub Body: AL7075 4 pawls 4 springs, compatible w/ Shimano or Sram 11sp cassette
Option: IS6: **QL-4AAMR** (Shimano)
 IS6: **QL-4AAXR** (Sram)
 Center Lock: **QL-4ABMR** (Shimano)

Boost X-12



Boost X-12





QL-SL2F

Spoke Hole: 14G/28, 32, 36
Axle System: 15mm Thru axle
Built-in Dimension: 100mm
Axle Material: AL7075
Flange PCD: 58mm
Sealed Cartridge Bearings(SB): 2pcs
Weight: 144g
Option: Center Lock: **QL-SL1F**

4in1

102T



QL-Y71MR

Spoke Hole: 14G/28, 32, 36
Axle System: 5mm quick release x135x145mm,
12mm Thru axle x142mm
Axle Material: AL7075
Flange PCD: 58mm / 64mm
Sealed Cartridge Bearings(SB): 4pcs
Weight: 310g
Freehub Body: AL7075 6 pawls 6 springs, compatible w/
Shimano or Sram XD cassette
Option: Center Lock: **QL-Y41MR** (Shimano)
QL-Y41XR (Sram)
IS6: **QL-Y71XR** (Sram)



QL-4S1MR

Spoke Hole: 14G/28, 32, 36
Axle System: 5mm quick release x135x145mm,
12mm Thru axle x142mm
Axle Material: AL7075
Flange PCD: 58mm
Sealed Cartridge Bearings(SB): 4pcs
Weight: 306g
Freehub Body: AL7075 4 pawls 4 springs,
Option: Center Lock: **QL-4SCMR** (Shimano)
QL-4SCXR (Sram)
IS6: **QL-4S1XR** (Sram)

X-12



X-12





QL-4ACF

Spoke Hole: 14G/24, 28
Axle System: 15mm Thru axle
Built-in Dimension: 100mm
Flange PCD: 37
Sealed Cartridge Bearings(SB): 2pcs
Weight: 127g
Option: IS6: QL-4ADF

4 in 1



QL-YMCMR

Spoke Hole: 14G/24, 28
Axle System: 5mm quick release x135x145mm,
 12mm Thru axle x142mm
Flange PCD: L: 39 / R: 59.8mm
Sealed Cartridge Bearings(SB): 4pcs
Weight: 293g
Freehub Body: AL7075 6 pawls 6 springs,
Option: IS6: QL-YM1MR (Shimano)
 IS6: QL-YM1XR (Sram)
 Center Lock: QL-YMCXR (Sram)



QL-4MCMR

Spoke Hole: 14G/24, 28
Axle System: 5mm quick release x145mm,
 12mm Thru axle x142mm
Flange PCD: L: 39 / R: 56.8mm
Sealed Cartridge Bearings(SB): 4pcs
Weight: 278g
Freehub Body: AL7075 4 pawls 4 springs, compatible
 w/Shimano or Sram XD cassette
Option: IS6: QL-4M1MR (Shimano)
 IS6: QL-4M1XR (Sram XD)
 Center Lock: QL-4MCXR (Sram)





MTB

Spline (For E-Bike)

For high torque riding with press-fit ratchet ring

QL-4E1MR

Spoke Hole: 14G/28, 32, 36

Axle System: 12mm Thru axle

Built-in Dimension: 142mm

Axle Material: AL7075

Flange PCD: 58mm

Sealed Cartridge Bearings(SB): 4pcs

Weight: 385g

Freehub Body: Cr-Mo 4 pawls x 4 springs

Option: Center Lock: **QL-4DCXR** (Sram)

Center Lock: **QL-4DCMR** (Shimano)

IS6: **QL-4E1XR** (Sram)



X-12



Boost

Spline (For E-Bike)

For high torque riding with press-fit ratchet ring

QL-4E2MR

Spoke Hole: 14G/28, 32, 36

Axle System: 12mm Thru axle

Built-in Dimension: 148mm

Axle Material: AL7075

Flange PCD: 58mm

Sealed Cartridge Bearings(SB): 4pcs

Weight: 395g

Freehub Body: Cr-Mo 4 pawls x 4 springs

Option: Center Lock: **QL-4ECXR** (Sram)

Center Lock: **QL-4ECMR** (Shimano)

IS6: **QL-4E2XR** (Sram)



Boost





IDØ5.2x100mm
32g

IDØ9x100mm
28g

IDØ15x100mm
25g

QL-TW1F

EXCHANGEABLE CONVERTER CAPS

- Spoke Hole:** 14G/32, 36
- Axle System:** 20mm Thru axle
- Built-in Dimension:** 110mm
- Axle Material:** AL7075
- Flange PCD:** 58mm
- Sealed Cartridge Bearings(SB):** 2pcs
- Weight:** 210g
- Option:** Non-Disc **QL-PS3F**
- Option:** IDØ15x110mm: **QL-TWEF** For Boost

4in1



- IDØ12x150mm
- IDØ12x157mm

QL-Y75MR

- Spoke Hole:** 14G/32, 36
- Axle System:** 12mm Thru axle x150mm,
12mm Thru axle x157mm
- Axle Material:** AL7075
- Flange PCD:** 58mm / 64mm
- Sealed Cartridge Bearings(SB):** 4pcs
- Weight:** 326g
- Freehub Body:** AL7075 6 pawls 6 springs, compatible
w/Shimano or Sram XD cassette
- Option:** IS6 **QL-Y75XR** (Sram)



QL-415MR

- Spoke Hole:** 14G/32, 36
- Axle System:** 12mm Thru axle x150mm,
12mm Thru axle x157mm
- Axle Material:** AL7075
- Flange PCD:** 58mm / 64mm
- Sealed Cartridge Bearings(SB):** 4pcs
- Weight:** 317g
- Freehub Body:** AL7075 4 pawls 4 springs, compatible
w/Shimano or Sram XD cassette
- Option:** IS6: **QL-415XR** (Sram)





102T **X-12** **4**in**1** **ONE HUB ALL SOLUTION**

From the perfect hubs to product durability, we have set benchmarks to ensure all our products undergo necessary quality tests and are performed under world's fastest riders.

With the cutting edge technology we apply to manufacture our cycling products. We hope the riders experience the best riding efficiency through their rides every day, day in and day out.



ROAD / GRAVEL / ROAD DISC



QL-4W8F

Spoke Hole: 14G/24, 28

Axle System: 5mm quick release,
12mm Thru axle, 15mm Thru axle,

Flange PCD: 40mm

Sealed Cartridge Bearings(SB): 2pcs

Weight: 115g

4in1



QL-4W8MR

Spoke Hole: 14G/24, 28

Axle System: 12mm Thru axle

Built-in Dimension: 142mm

Flange PCD: L: 40 / R: 58mm

Sealed Cartridge Bearings(SB): 4pcs

Weight: 248g

Freehub Body: AL7075 4 pawls 4 springs, compatible w/
Shimano 11sp or Sram XD cassette
Center Lock: **QL-4W8DR** (Sram XDR)

X-12





QL-4ACF

Spoke Hole: 14G/24, 28

Axle System: 12mm Thru axle

Flange PCD: 37mm

Sealed Cartridge Bearings(SB): 2pcs

Weight: 130g

Option: IS6: QL-4EDF

4 in 1



QL-SL1F

Spoke Hole: 14G/ 24, 28

Axle System: 12mm Thru axle

Built-in Dimension: 100mm

Axle Material: AL7075

Flange PCD: 58mm

Sealed Cartridge Bearings(SB): 2pcs

Weight: 148g

Option: IS6: QL-SL2F

4 in 1



QL-4MCMR

Spoke Hole: 14G/24, 28

Axle System: 12mm Thru axle

Built-in Dimension: 142mm

Flange PCD: L: 39 / R: 56.8mm

Sealed Cartridge Bearings(SB): 4pcs

Weight: 278g

Freehub Body: AL7075 4 pawls 4 springs, compatible w/ Shimano 11sp or Sram XD/XDR cassette

Option: IS6: QL-4M1MR



QL-4VBMR

Spoke Hole: 14G/24, 28

Axle System: 12mm Thru axle

Built-in Dimension: 142mm

Axle Material: AL7075

Flange PCD: 58mm

Sealed Cartridge Bearings(SB): 4pcs

Weight: 266g

Freehub Body: AL7075 4 pawls 4 springs, compatible w/ Shimano or Sram XD/XDR cassette

Option: IS6: QL-4VDMR (Shimano)

Center Lock: QL-4VDDR (Sram XDR)

IS6: QL-4VBDR (Sram XDR)

X-12



X-12





QL-ZN1F

Spoke Hole: 14G/16, 20

Axle System: 5mm quick release

Axle Material: AL7075

Sealed Cartridge Bearings(SB): 2pcs

Weight: 87g



QL-2NBF

Spoke Hole: 14G/16, 20

Axle System: 5mm quick release

Axle Material: AL7075

Sealed Cartridge Bearings(SB): 2pcs

Weight: 101g



QL-ZN2R

Spoke Hole: 14G/20, 24

Axle System: 5mm quick release

Axle Material: AL7075

Sealed Cartridge Bearings(SB): 4pcs

Weight: 245g

Freehub Body: AL7075 6 pawls 6 springs, compatible w/Shimano 11sp or Campy 11sp cassette.

Option: Campy 11sp cassette: **QL-ZN2CR**



QL-4NAR

Spoke Hole: 14G/20, 24

Axle System: 5mm quick release

Axle Material: AL7075

Sealed Cartridge Bearings(SB): 4pcs

Weight: 230g

Freehub Body: AL7075 4 pawls 4 springs, compatible w/Shimano or Campy 11sp cassette





QL-2K2F

Spoke Hole: 14G/20, 24

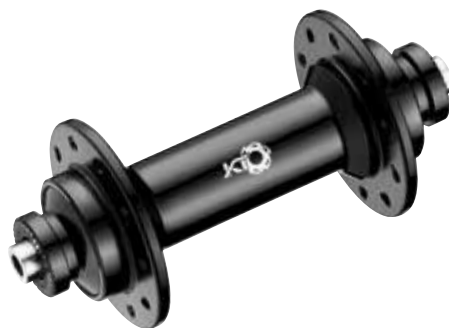
Axle System: 5mm quick release

Axle Material: AL7075

Flange PCD: 32mm

Sealed Cartridge Bearings(SB): 2 pcs

Weight: 80g



QL-GN1F

Spoke Hole: 14G/20, 32

Axle System: 5mm quick release

Axle Material: AL7075

Flange PCD: 40mm

Sealed Cartridge Bearings(SB): 2pcs

Weight: 127g



QL-ZL7R

Spoke Hole: 14G/20, 24

Axle System: 5mm quick release

Axle Material: AL7075

Flange PCD: L: 40 / R: 51mm

Sealed Cartridge Bearings(SB): 4pcs

Weight: 252g

Freehub Body: AL7075 6 pawls 6 springs, compatible w/Shimano or Campy 11sp cassette

Option: AL7075 cassette body compatible w/Campy 11sp cassette: **QL-ZL7CR**



QL-2VBR

Spoke Hole: 14G/20, 24

Axle System: 5mm quick release

Flange PCD: L:38 / R:49

Sealed Cartridge Bearings(SB): 4pcs

Weight: 233g

Freehub Body: AL7075 3 pawls 1 spring





QL-DF6F

Spoke Hole: 14G/32
Axle Dim.: 3/8"x100x140mm
Axle Material: Cr-Mo
Flange PCD: 62.5mm
Sealed Cartridge Bearings(SB): 2pcs
Weight: 274g
Options: M9x1.0 solid axle: **QL-DQ9F**
 M9x1.0 hollow axle: **QL-DF2F**



QL-DF6R

Spoke Hole: 14G/32
Axle Dim.: 3/8"x120x165mm
Axle Material: Cr-Mo
Flange PCD: 62.5mm
Sealed Cartridge Bearings(SB): 2pcs
Weight: 383g
Freewheel: L: fixed gear / R: BC1.37x24T
Cog options: 14, 16, 17, 18T
Options: M10x1.0 solid axle: **QL-DQ9R**
 M10x1.0 hollow axle: **QL-DF2R**



QL-DF9R

Spoke Hole: 14G/32
Axle Dim.: 3/8"x120x165mm
Axle Material: Cr-Mo
Flange PCD: 62.5mm
Sealed Cartridge Bearings(SB): 2pcs
Weight: 380g
Freewheel: L / R: fixed gear
Cog options: 14, 16, 17, 18T
Option: M10x1.0 solid axle: **QL-DQ0R**





QL-TB4F

Spoke Hole: 14G/28, 32, 36
Axle System: 5mm quick release x158mm,
 15mm Thru axle x150mm,
Axle Material: AL7075
Flange PCD: 58mm
Sealed Cartridge Bearings(SB): 2pcs
Weight: 278g
Options: Center Lock: **QL-TC4F**
 IDØ15x135mm **QL-TB1F**



QL-YVFR

Spoke Hole: 14G/28, 32, 36
Axle System: 12mm Thru axle x190mm,
 12mm Thru axle x197mm
Axle Material: AL7075
Flange PCD: 58mm
Sealed Cartridge Bearings(SB): 2pcs
Weight: 539g
Option: Center Lock: **QL-YUCR** (Shimano)
 IS6, No CNC DISC: **QL-YUFR** (Shimano)



CASSETTE BODY



3X1 COATED series



- IDØ10x190mm
- IDØ12x190mm
- IDØ12x197mm

IDØ5.2x190x200mm

QL-4SAMR

Spoke Hole: 14G/28, 32, 36
Axle System: 12mm Thru axle x190mm,
 12mm Thru axle x197mm
Axle Material: AL7075
Flange PCD: 58mm
Sealed Cartridge Bearings(SB): 4pcs
Weight: 374g
Freehub Body: AL7075 4 pawls 4 springs
Option: IS6: **QL-4SAXR** (Sram)
 Center Lock: **QL-4CAMR** (Shimano)
 IDØ12x170mm: **QL-4SDMR** (Shimano)



CASSETTE BODY



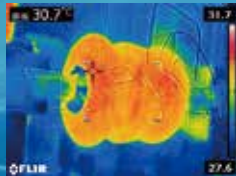
Shimano 11sp



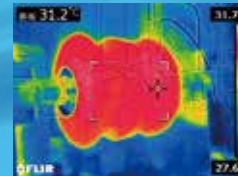
SRAM XD 11sp

The internal of Dynamo Hub contains a high and powerful NdFeB magnet. When this magnet encounters the heat element, it will cause a demagnetization effect. Therefore, the temperature will have an impact on the Dynamo Hub.

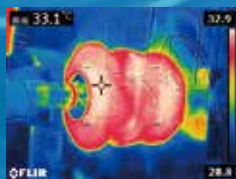
5km/h、15km/h、25km/h、35km/h、45km/h are the measurements of temperature after a journey of 100 km.



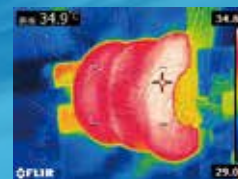
▶ 5km/Hr- RIDING 100km



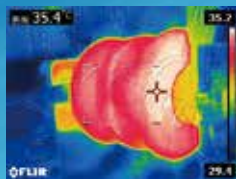
▶ 15km/Hr- RIDING 100km



▶ 25km/Hr- RIDING 100km

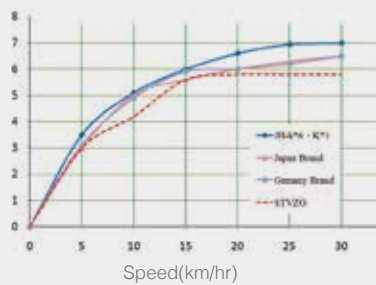


▶ 35km/Hr- RIDING 100km

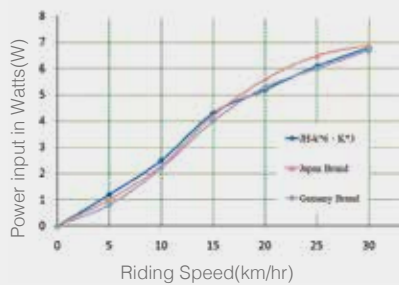


▶ 45km/Hr- RIDING 100km

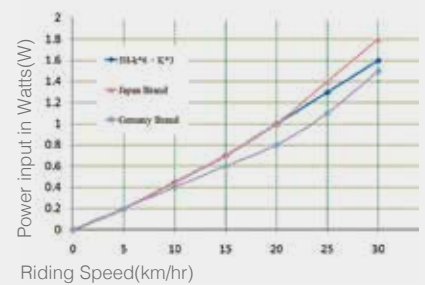
POWER TEST



▶ Wheel STVZO voltage output test



▶ Light switched on



▶ Lights switched off



CITY

TREKKING / CITY

AC-6V3W ~ K 1280

Kx6 Series / QR Dynamo Hub system**Kx5 Series / Thru Axle 15 & 12mm Dynamo Hub System**

With our best craft and technology for generators and the use of a simple, natural but powerful oak-barrel-like exterior with the inclusion of a delicate and high quality spirit, we have innovated the concept of making our Dynamo Hub a smooth and streamlined appearance with a touch of metropolitanism. The QR Dynamo System is applied to all specifications of bicycles.

**JH-KC6F**

Weight: 405g
Brake Type: Centerlock Brake
Axle Type: QR
Flange Diameter: 60mm
Spoke P.C.D: 52mm
Spoke Holes: 32H / 36H
O.L.D: 100mm
Sealed Cartridge Bearing(SB): 2pcs (6000)

**JH-KD6F**

Weight: 415g
Brake Type: Disc Brake
Axle Type: QR
Flange Diameter: 66mm(Disc side) & 60mm
Spoke P.C.D: 58mm(Disc side) & 52mm
Spoke Holes: 32H / 36H
O.L.D: 100mm
Sealed Cartridge Bearing(SB): 2pcs (6000)

**JH-KV6F**

Weight: 395g
Brake Type: V-Brake
Axle Type: QR
Flange Diameter: 60mm
Spoke P.C.D: 52mm
Spoke Holes: 32H / 36H
O.L.D: 74mm / 100mm
Sealed Cartridge Bearing(SB): 2pcs (6000)

FOLDING Bike**QL-M74F**

Spoke Hole: 14/20, 24, 28
AAxle System: 5mm quick release / 74x82mm
Axle Material: AL7075
Flange PCD: 32mm
Sealed Cartridge Bearings(SB): 2 pcs
Weight: 68g



FOLDING BIKE

THROUGH AXLE DYNAMO HUB



JH-KD5F

Weight: 456g
Brake type: Disc Brake
Axle Type: QR 15 / 12 / 5.2mm (one hub can be compatible with 3 different end cap)
Flange Diameter: 66mm
Spoke P.C.D: 58mm
Spoke Holes: 28H / 32H / 36H
O.L.D: 100mm; 110mm for Boost (JH-KD1F)
Sealed Cartridge Bearing (SB): 2pcs

Boost 4 in 1



IDØ15mm & Ø12mm

IDØ5.2mm



JH-KC5F

Weight: 448g
Brake type: Centerlock
Axle Type: QR 15 / 12 / 5.2mm (one hub can be compatible with 3 different end cap)
Flange Diameter: 66mm
Spoke P.C.D: 58mm
Spoke Holes: 28H / 32H / 36H
O.L.D: 100mm; 110mm for Boost (JH-KC1F)
Sealed Cartridge Bearing (SB): 2pcs

Boost 4 in 1



IDØ15mm & Ø12mm

IDØ5.2mm

► ACCESSORY

CONVERTER KIT

for MTB front hub OLD 100mm to 110mm (Boost)

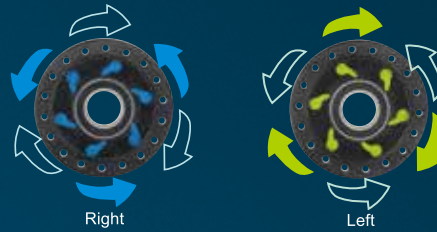


TECHNOLOGIES



REVERSAL ENGAGED SYSTEM

- 6 pawls related system designed for BMX dirt jump
- Easy maintenance without any special tools
- The engaged pawls can be reversed to L side or R side easily

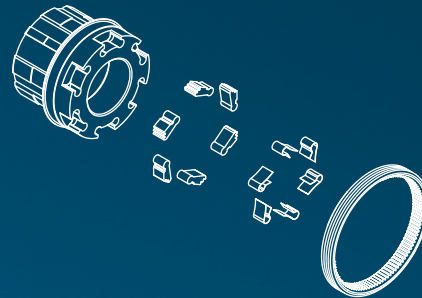


TECHNOLOGIES



INSTANT ENGAGED SYSTEM I 102 SYSTEM

6 pawls, 6 springs & 102 tooth AL7075 or Cr-Mo freehub body compatible w/Shimano 11sp & Campy 9, 10, 11sp cassette.

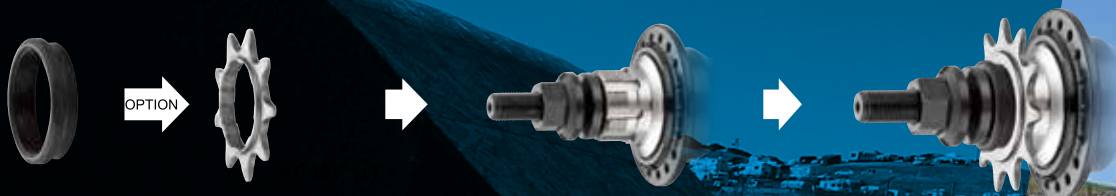


TECHNOLOGIES

Mini - Patent Pending -

The best solution for BMX one-piece driver & cassette, all-in-one, only one hub including different teeth of cogs (9T, 10T, 11T, 3/32", 1/8")

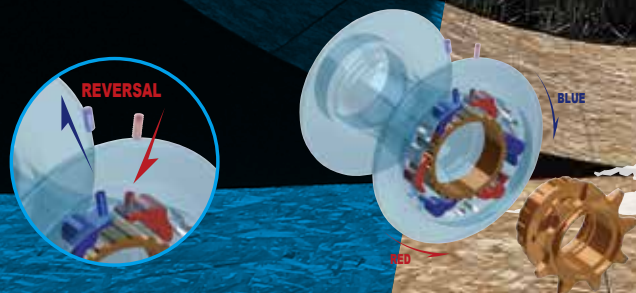
PATENT NO. CN ZL 2008 2 0117603.X



TECHNOLOGIES

LEFT-RIGHT DRIVE

- 6 pawls related system designed for BMX dirt jump
- Easy maintenance without any special tools
- The engaged pawls can be reversed to L side or R side easily



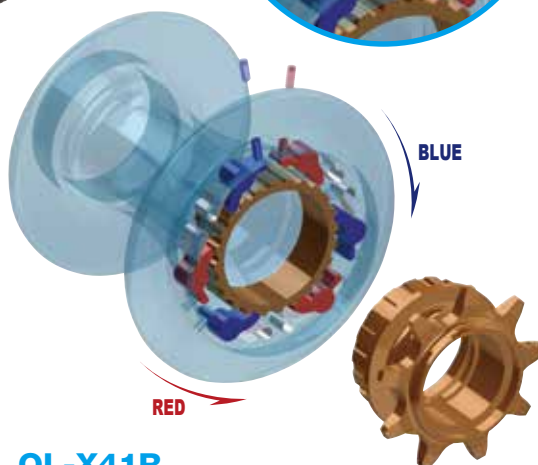
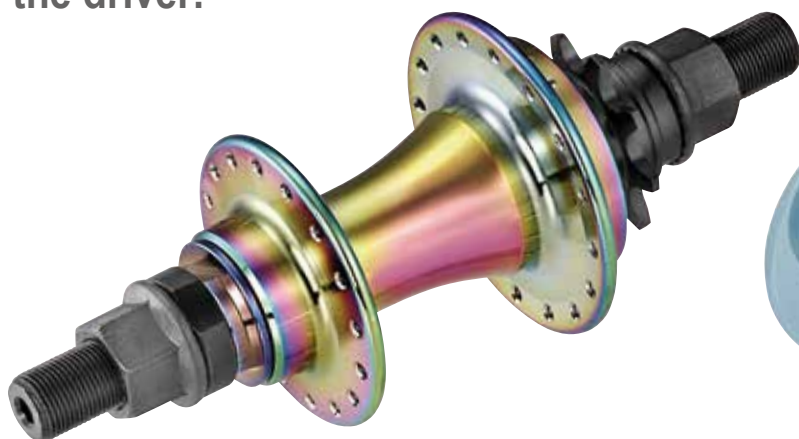


& COASTER BRAKE

MADE IN TAIWAN ONLY

Easy and Fast , New Concept for making Reversal !

You don't actually need any tools to remove the driver.



QL-X41R

Spoke Hole: 14G/ 32 , 36

Axle Dim: M14(Hollow IDØ5.2)x110x175,180mm

Axle Material: Cr-Mo

Flange PCD: L: 51 / R: 53mm

Sealed Bearing: 5pcs

Weight: 462g

Driver: L3 + R3 with 6 spring, one piece forged driver

BMX for 8T, 9T, 10T, 11T 1/8" & 3/32"

(OE: QL-X4AR)



REVERSAL ENGAGED SYSTEM

- 6 pawls related system designed for BMX dirt jump
- Easy maintenance without any special tools
- The pawls can be reversed to L side or R side easily

QL-X41R is an ultra-intelligent rear hub for BMX. All similar hubs with reversal function available in the market require bikers to disassemble driver and switch the position of pawls and springs in order to change engaged direction. The old design is not only time-consuming and outdated but also cause so much inconvenience during the process of disassembly and assembly. Especially it is easy to get lost the pawls and springs popping up in the middle of disassembly. KT has just launched a redesigned hub which requires the most effortless way to switch the engaged direction without the needs to break down any components by adjusting the 3 sets screw on the hub shell.





QL-MH1F

Spoke Hole: 14G/32, 36
Axle System: 5mm quick release x108mm
Axle Material: AL7075
Flange PCD: 58mm
Sealed Cartridge Bearings(SB): 2pcs
Weight: 234g
Options: 3/8" solid axle: **QL-MH3F**
 Cr-Mo axle w/internal thread for M6 bolt:
QL-MHGF



102T



QL-YKZR

Spoke Hole: 14G/32, 36
Axle System: 5mm quick release x135x145mm,
 12mm Thru axle x135mm
Axle Material: AL7075
Flange PCD: 58mm
Sealed Cartridge Bearings(SB): 4pcs
Weight: 337g
Freehub Body: AL7075 6 pawls 6 springs, 1sp cog
Option: Center Lock: **QL-YCZR**
 Cr-Mo Freehub Body **QL-YCPR** (Center Lock)
 Internal Lock Ring: **QL-YKUR**



▶ **CASSETTE BODY**
 AL7075 or Cr-Mo 6 springs & 6 pawls
 102T for one speed



102T



QL-YKTR

Spoke Hole: 14G/32, 36
AAxle System: 5mm quick release x110x120mm
Axle Material: AL7075
Flange PCD: 58mm
Sealed Cartridge Bearings(SB): 4pcs
Weight: 325g
Freehub Body: Cr-Mo 6 pawls 6 springs, 1sp cog



▶ **ACCESSORY**



Shim washer 1.0T



Lock-ring



Al spacer



Flat sprocket Options:
 13T, 14T, 16T, 18T
 (3T or 2.3T)



QL-G33F

Spoke Hole: 14G/36
Axle Dim.: 3/8"x100x140, 155mm
Axle Material: Cr-Mo
Flange PCD: 38mm
Sealed Cartridge Bearings(SB): 2pcs
Weight: 202g
Options: Alloy end cap: **QL-G35F**
 Burnished balls: **QL-G53F**



QL-Y29R

Spoke Hole: 14G/36, 48
Axle Dim.: M14 (Hollow IDØ5.2) x110x175, 180mm
Axle Material: Cr-Mo
Flange PCD: L: 51 / R: 53mm
Sealed Cartridge Bearings(SB): 4pcs
Weight: 480g
Driver: 6 pawls 6 springs, one-piece forged driver (8, 9, 10, 11, 1/8") RHD
Options: LHD driver: **QL-Y19R**
 RHD driver 3/8" solid axle: **QL-Y28R**



QL-Y25R

Spoke Hole: 14G/32, 36
Axle Dim.: M10 (Hollow w/internal thread M6) x110x120mm
Axle Material: AL7075
Flange PCD: L: 51 / R: 53mm
Sealed Cartridge Bearings(SB): 4pcs
Weight: 309g
Driver: 6 pawls & 6 springs, forged cassette 1sp RHD



▶ ACCESSORY



Shim washer 1.0T



Lock-ring



Al spacer



Flat sprocket Options:
 13T, 14T, 16T, 18T
 (3T or 2.3T)



FLAT LAND FREE-COASTER

BMX, FLAT LAND FREE-COASTER

BMX DISC



QL-3V8R

Spoke Hole: 14G/32, 36

Axle Dim.: 3/8"x135x175, 180mm

Axle Material: Cr-Mo

Flange PCD: 58mm

Sealed Cartridge Bearings(SB): 3pcs

Weight: 542g

Driver: Forged one piece driver (9, 10, 11T 1/8") RHD



QL-3U8R

ONE-PIECE DRIVER

Spoke Hole: 14G/36

Axle Dim.: 3/8"x110x175, 180mm

Axle Material: Cr-Mo

Flange PCD: 46mm

Sealed Cartridge Bearings(SB): 3pcs

Weight: 475g

Driver: Forged one piece freecoaster driver
(9T 3/32") RHD

Options: M14 axle adaptor: **QL-3T8R**

M14 through axle: **QL-391R**



QL-39AR

ONE-PIECE DRIVER

Spoke Hole: 14/36

Axle Dim.: M14 (Hollow w/internal thread M10)
x110x120mm

Axle Material: Cr-Mo

Flange PCD: 51mm

Sealed Cartridge Bearings(SB): 3pcs

Weight: 602g

Driver: Forged one piece freecoaster driver
(9T 3/32") RHD



COASTER BRAKE

TEST APPROVED BY CHC, STANDARD BSEN14764, CONTRACT NO.11060303B

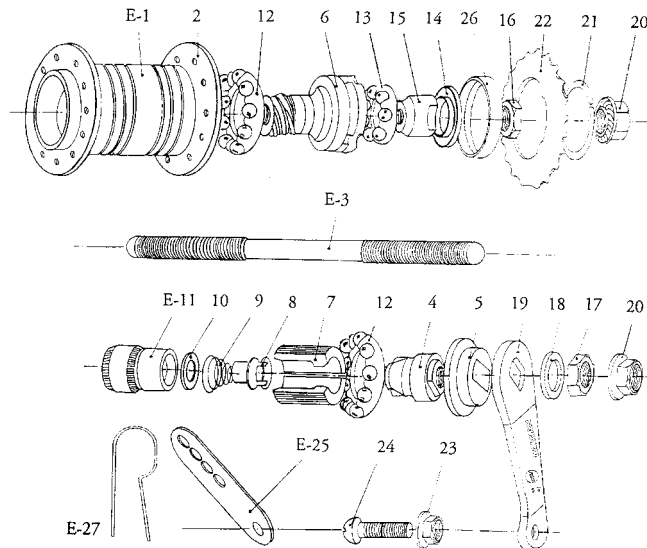


All complete with sprocket(E-22) & associated parts(E-20, 21, 23, 24, 25, 26), additional accessory will be upcharge

Axle length options: 3/8"x24Tx110x150, 155, 163, 170, 175.

Sprocket teeth options: same price for choosing 14T, 16T, 18T, 19T, if 20T, 22T will be upcharge.

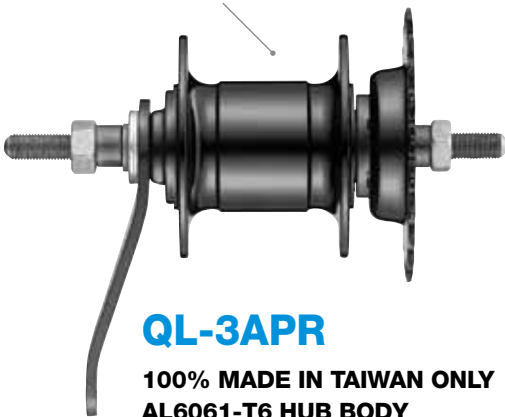
PART NO.	DESCRIPTION
E-1	Shell
E-2	Flange
E-3	Axle
E-4	Brake cone
E-5	Dust cap
E-6	Driver
E-7	Brake shoe
E-8	Spring holder
E-9	Clutch spring
E-10	Clutch washer
E-11	Clutch cone
E-12	Ball retainer 7/32" x 9 pcs
E-13	Ball retainer 1/4" x 7 pcs
E-14	Cone cover
E-15	Cone
E-16	Lock nut (a) 17x9mm
E-17	Lock nut (b) 17x7mm
E-18	Washer
E-19	Brake arm
E-20	Flange nut 3/8" x 24t
E-21	Lock ring
E-22	Sprocket 14t, 16t, 18t, 19t, 20t, 22t
E-23	Clip nut
E-24	Clip screw
E-25	Arm clip
E-26	Dust cap
E-27	Bend arm clip



ACCESSORIES (optional)



Alloy one piece cold forged hub shell



QL-3APR

100% MADE IN TAIWAN ONLY

AL6061-T6 HUB BODY

Spoke Hole: 14G/36

Axle Material: Cr-Mo

Flange PCD: 69mm

Flange distance: 59mm

Weight: 925g (7 accessories)

Surface: Anodized color optional



QL-307R-T

100% MADE IN TAIWAN ONLY

Spoke Hole: 14G/36, 12/36

Axle Material: Cr-Mo

Flange PCD: 48.5mm

Flange distance: 47.4mm

Weight: 704g+94g (7 accessories)

Surface: Chrome Plated (CP) or ED black



CONVERTER KIT

FOR 9SP TO 1SP, ACCESSORY INCLUDING

Sprocket, 2 Alloy spacers 13.5L & 20L, lock-ring & shim washer 1T

- Code no.** MCPAHY313CP23 (13T)
 MCPAHY314CP23 (14T)
 MCPAHY316CP23 (16T)
 MCPAHY31200C5 (12T)
 MCPAHY318CP23 (18T)



ACCESSORY

FOR TRACK FIXED GEAR HUBS, INCLUDING

Sprocket, lock-ring & shim washer 1T

- Code no.** MCPA34A00000D (16T)
 MCPA32100000D (14T)
 MCPA42200000D (17T)
 MCPA42X00000D (18T)
 MCPADF614PC0D (14T)
 MCPADF615PC0D (15T)
 MCPADF616PC0D (16T)
 MCPADF617PC0D (17T)
 MCPADF618PC0D (18T)
- 2.7t for 1/8" chain economic, BK
 2.7t for 1/8" chain lighter, Chrome Plated



ACCESSORY



CONVERTER AXLE FOR QL-SA5F FROM ID15 TO ID5.2MM

MBQXSA5F-BD61A6(silver) / MBQXSA5F-BD61A7(black)



FLAT SPROCKET OPTIONS:

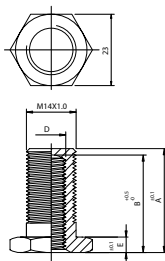
13,14,16,18T (3/32" 2.3t & 1/8" 3t)

14MM Cr-Mo AXLE CONVERTER

Patent no. GE 29702091.9 / TW 131401

Please check the compatibility before inquiry:

1. End nut thickness on 3/8" axle should be same as E size from the chart
2. The distance should be shorter 0.5mm than B dim. After disassembly 3/8" axle end nut



Total length after assembly	A	B	D	E
175	42.5	35.5	3/8"x26T	5
155	32.5	25.5	3/8"x26T	5
185	47.5	40.5	3/8"x26T	5
180	46.0	39.0	3/8"x24T	6
185	48.5	41.5	3/8"x24T	6
175	43.5	36.5	3/8"x24T	6
153	32.5	25.5	3/8"x24T	6
160	36.0	29.0	3/8"x24T	6
165	38.5	31.5	3/8"x24T	6
170	41.0	34.0	3/8"x24T	6
171	42.5	35.5	3/8"x24T	7
161	37.5	30.5	3/8"x24T	7
168	40.0	33.0	3/8"x24T	6
165	37.5	30.5	3/8"x26T	5
170	40.0	33.0	3/8"x26T	5
160	35.0	28.0	3/8"x26T	5

Options

(Tightening torque: 250 kgf.cm) unit: mm

QL-205SH[R]

Option: With Nut **205SK**, For ID12, 105g

QL-204SH[F]

Option: With Nut **204SK**, For ID12 / 15, 66g

Available for Shimano Syntace, Sram, DT Swiss, Fox Drop out system



Titanium material



QL-205VM[R]

27g, Titanium

QL-204VM[F]

25g, Titanium



NEW (Patented)

QL-205SV[R]

52g

QL-204SV[F]

43g

QL-205VN[R]

36g Cr-Mo

QL-204VN[F]

32g Cr-Mo

Built-in tool

Available for Shimano Syntace, Sram, DT Swiss, Fox Drop out system



QL-205RE[R]

64g

QL-204RE[F]

58g



QL-205VV[R]

52g

QL-204VV[F]

47g



QL-205V3[R] 56.5g
QL-204V3[F] 50.5g



QL-205W 10MM[R] 111g
QL-204W 9MM[F] 80g



QL-205YA[R] 60g
QL-204YA[F] 55g



QL-205N[R] 64g
QL-204N[F] 58g



QL-205C[R] 100g
QL-204C[F] 95g



QL-205FK[R] 35g
QL-204FK[F] 30g

FREEHUB BODY / ONE-PIECE DRIVER

▶ 102T SERIES (6X6 SERIES) | FOR MTB / ROAD / ROAD DISC / GRAVEL



SRAM XD / XDR 102T Freehub Body

AL7075 6 springs & 6 pawls 102T for SRAM XD.



102T Freehub Body

AL7075 or Cr-Mo 6 springs & 6 pawls 102T for one speed.



Shimano 102T Freehub Body

AL7075 6 springs & 6 pawls 102T for Shimano 11sp.



Anti Bite

Press-fit Cr-Mo plate (w/ phosphate coating) into Alloy cassette body to prevent from free wheel biting.

▶ 6X6 SERIES | FOR ROAD



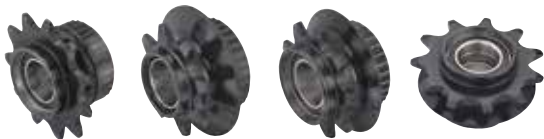
Campy 6X6 Freehub Body

AL7075 6 springs & 6 pawls for Campy 9, 10, 11sp.



Shimano 6X6 Freehub Body

AL7075 6 springs & 6 pawls for Shimano 11sp. (add one 1mm Washer) for Shimano 10sp & MTB 11sp.



6X6 ONE-PIECE DRIVER

One-piece cold forged, phosphoric coated

▶ 4X4 SERIES | FOR E-BIKE / MTB / ROAD / ROAD DISC / GRAVEL



SRAM XD / XDR 4X4

AL7075 4 springs & 4 pawls for SRAM XD.



Campy 4X4 Freehub Body

AL7075 4 springs & 4 pawls for Campy 9, 10, 11sp.



Shimano 4X4 Freehub Body

AL7075 or Cr-Mo 4 springs & 4 pawls for Shimano 11sp.



Anti Bite

Press-fit Cr-Mo plate (w/ phosphate coating) into Alloy cassette body to prevent from free wheel biting.

▶ **3X1 COATED SERIES |**
FOR MTB / ROAD DISC



3X1 Freehub Body

Threaded type 1 spring & 3 pawls for DH & FREERIDE, Cr-Mo cold forged for Shimano or Sram 9, 10sp cassette.

▶ **3X1 SERIES |**
FOR ROAD



3X1 Freehub Body

1 spring & 3 pawls for ROAD AL7075 One-piece forged for Shimano or Sram 9, 10sp, 11sp cassette, anod.



3X1 Freehub Body

1 spring & 3 pawls for ROAD AL7075 one-piece forged for Campy 9, 10, 11sp cassette, anod.

▶ **6X6 COATED SERIES |**
FOR BMX / BATICAN / PINIET



6X6 Freehub Body

Cr-Mo One-piece cold forged, 1sp cassette RHD phosphoric coated.

▶ **3X1 SERIES**



3X1 SPLINE TYPE Freehub Body

1 spring & 3 pawls for MTB, ROAD, Cr-Mo cold forged, Shimano or Sram 8, 9, 10, 11sp.

▶ **3X1 SERIES |**
FOR E-BIKE



3X1 Freehub Body

1 spring & 3 pawls for MTB, Cr-Mo cold forged, Shimano or Sram 8, 9, 10, 11sp.

▶ **ANTI BITE**



4X4 / 6X6 102T

Press-fit Cr-Mo plate (w/ phosphate coating) into Alloy cassette body to prevent from free wheel biting.

▶ **SPLINE**

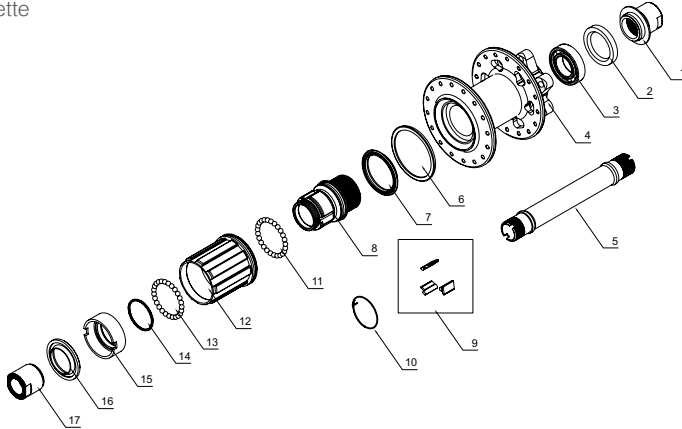


Ratchet Ring

High torque Spline press-fit ratchet ring, for E-bike.

QL-XD2R / QL-XD8R

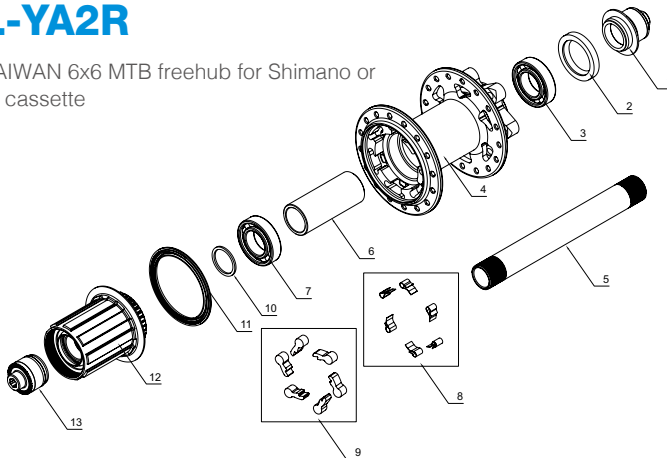
KT TAIWAN 3x1 MTB freehub for Shimano cassette



ITEM#	DESCRIPTION	Q'TY
1	End cap (L-ID12-142)	1
2	Internal seal	1
3	Bearing (15268)	2
4	Hub shell	1
5	Axle	1
6	Internal seal	1
7	Internal seal	1
8	Cassette central fixture	1
9	Pawl	3
10	Fixing ring	1
11	Steel ball	50
12	Cassette body	1
13	Steel ball	1
14	Washer	1
15	Ball bearing inner cone	1
16	Internal seal	1
17	End cap (R-ID12-142)	1

QL-YA2R

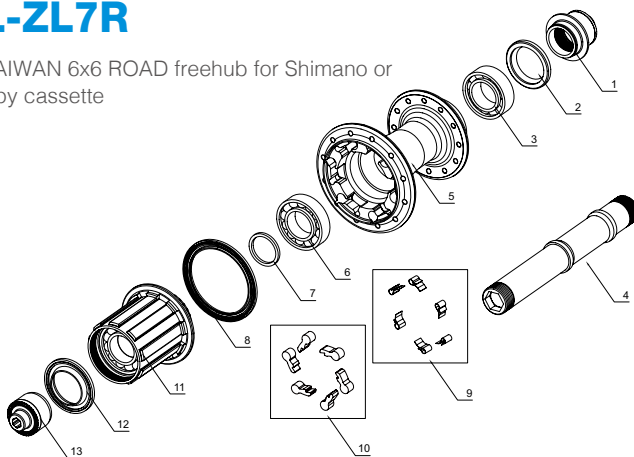
KT TAIWAN 6x6 MTB freehub for Shimano or Sram cassette



ITEM#	DESCRIPTION	Q'TY
1	End cap (L)	1
2	Internal seal	1
3	Bearing (61902)	1
4	Hub shell	1
5	Bushing	1
6	Axle	1
7	Bearing (6902)	1
8	Spring	6
9	Pawl	6
10	Washer	1
11	Internal seal	1
12	Cassette body set	1
13	End cap (R)	1

QL-ZL7R

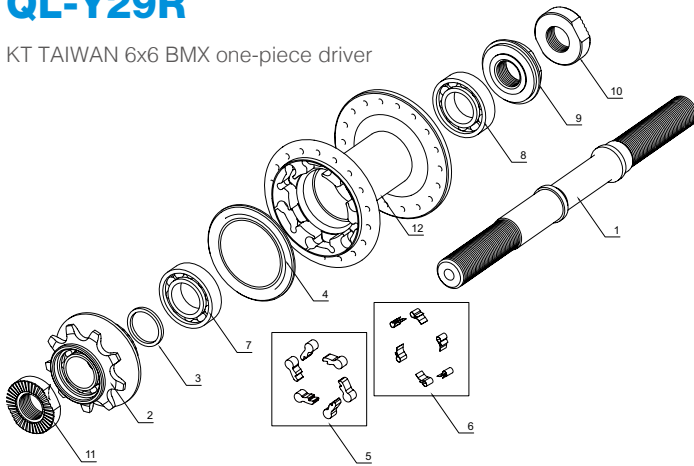
KT TAIWAN 6x6 ROAD freehub for Shimano or Campy cassette



ITEM#	DESCRIPTION	Q'TY
1	End cap	1
2	Seal	1
3	Sealed bearing	1
4	AL7075 axle	1
5	Hub shell	1
6	Sealed cartridge bearing (Under 6 pawls)	1
7	Shim washer	1
8	Seal (above 6 pawls)	1
9	Spring	6
10	Pawl	6
11	Freehub Body	1
12	External seal	1
13	End cap	1

QL-Y29R

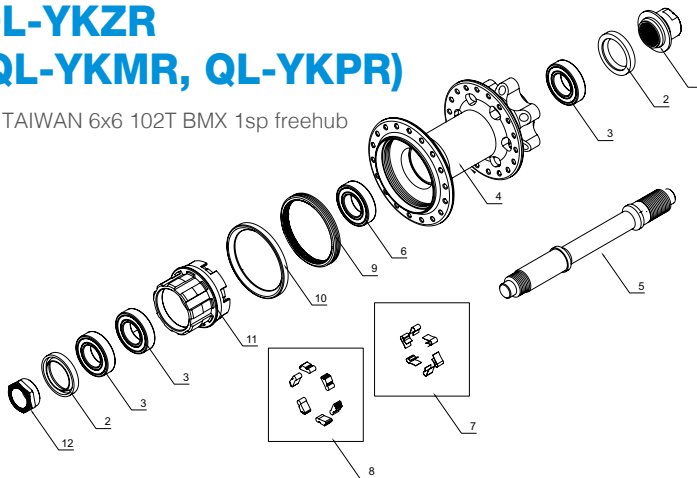
KT TAIWAN 6x6 BMX one-piece driver



ITEM#	DESCRIPTION	Q'TY
1	Cr-Mo axle	1
	One-piece driver 9t, 10t, 11t available	1
2	Sealed bearing	2
	Shim washer between 2 bearings	1
3	Shim washer	1
4	Seal (above 6 pawls)	1
5	Pawl	6
6	Spring	6
7	Sealed bearing (under 6 pawls)	1
8	Sealed bearing (non-drive side)	1
9	Alloy end cap	1
10	Lock-nut	1
11	Lock-nut	1
12	Hub shell	1

QL-YKZR (QL-YKMR, QL-YKPR)

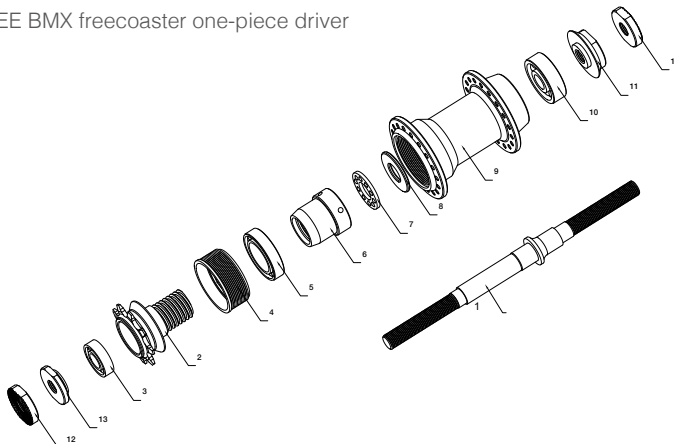
KT TAIWAN 6x6 102T BMX 1sp freehub



ITEM#	DESCRIPTION	Q'TY
1	End cap (L)	1
2	Internal seal	2
3	Bearing (6902)	3
4	Hub shell	1
5	Axle	1
6	Bearing (6902)	1
7	Spring	6
8	Pawl	6
9	Ratchet ring	1
10	Internal seal	1
11	Cassette body	1
12	End cap (R)	1

QL-3U8R

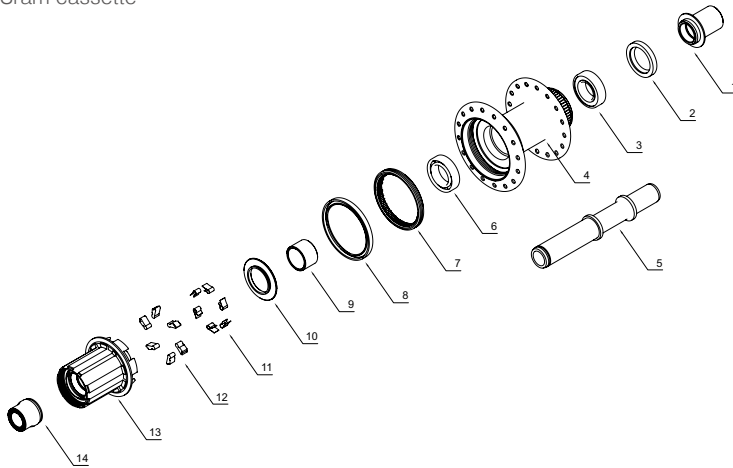
U-FREE BMX freecoaster one-piece driver



ITEM#	DESCRIPTION	Q'TY
1	Cr-Mo solid axle	1
2	One-piece driver 9t	1
3	Bearing, driver side	1
4	Bearing seat, steel in thread	1
5	Bearing, outer driver	1
6	Patent clutch cone	1
7	Ball retainer	1
8	Washer	1
9	Hub shell	1
10	Bearing	1
11	End cap	1
12	Cone nut	2
13	End cap	1

QL-Y71XR / QL-Y41XR

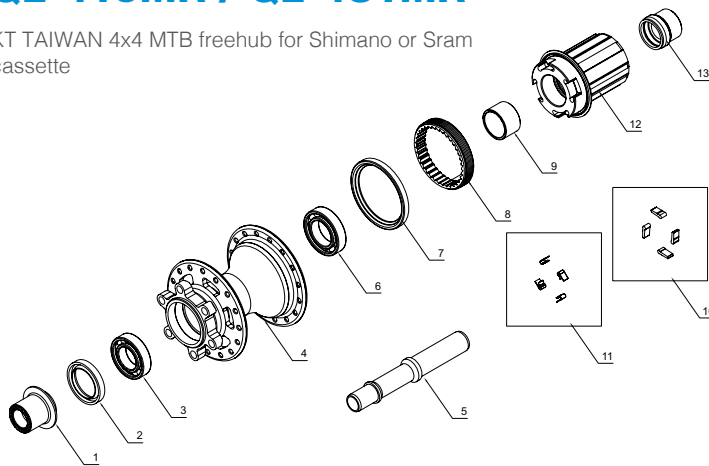
KT TAIWAN 6x6 102T MTB freehub for Shimano or Sram cassette



ITEM#	DESCRIPTION	Q'TY
1	Cap (L)	1
2	Internal seal	1
3	Bearing (6902)	1
4	Hub shell	1
5	Axle	1
6	Bearing (17287)	1
7	Ratchet ring	1
8	Internal seal	1
9	Bushing	1
10	Washer	1
11	Spring	6
12	Pawl	6
13	Cassette body	1
14	Cap (R)	1

QL-415MR / QL-4S1MR

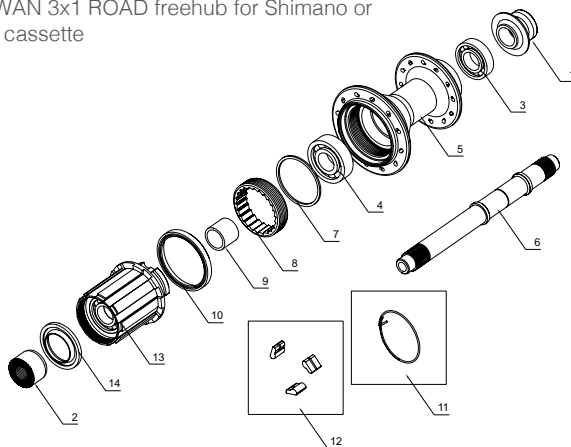
KT TAIWAN 4x4 MTB freehub for Shimano or Sram cassette



ITEM#	DESCRIPTION	Q'TY
1	Cap (ID12-L-142w)	1
2	Internal Seal	1
3	Bearing (6902)	1
4	Hub Shell	1
5	Axle	1
6	Bearing (6903)	1
7	Internal Seal	1
8	Ratchet Ring	1
9	Bushing	1
10	Pawl	4
11	Spring	4
12	Cassette Body	1
13	Cap (ID12-L-142w)	1

QL-2VBR (QL-2VDR)

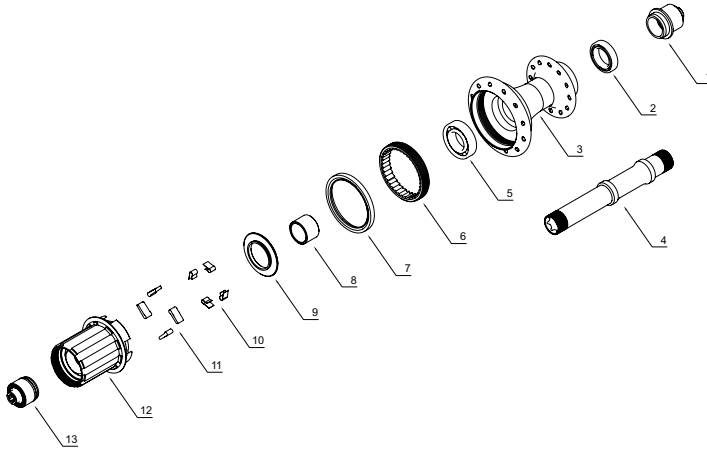
KT TAIWAN 3x1 ROAD freehub for Shimano or Campy cassette



ITEM#	DESCRIPTION	Q'TY
1	End cap (L)	1
2	End cap (R)	1
3	Sealed bearing (non-drive side)	1
4	Sealed bearing (drive side)	1
5	Hub shell	1
6	AL7075 axle	1
7	Washer	1
8	Ratchet ring	1
9	Steel spacer	1
10	Internal seal	1
11	Spring	1
12	Pawl	3
13	AL7075 Freehub Body (Shimano)	1
14	External seal (drive side)	1

QL-4J7R

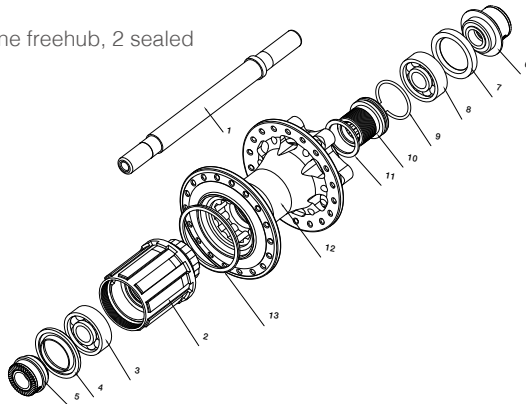
KT TAIWAN 4x4 ROAD freehub for Shimano or Campy cassette



ITEM#	DESCRIPTION	Q'TY
1	Cap (L)	1
2	Bearing (6802)	1
3	Hub shell	1
4	Axle	1
5	Bearing (6902)	1
6	Ratchet ring	1
7	Internal seal	1
8	Bushing	1
9	Washer	1
10	Spring	4
11	Pawl	4
12	Cassette body	1
13	Cap (R)	1

QL-SS6R

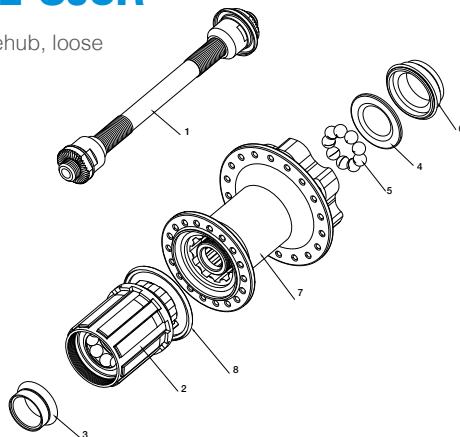
KT TAIWAN 3x1 spline freehub, 2 sealed bearings



ITEM#	DESCRIPTION	Q'TY
1	Axle	1
2	Cassette body set, splined type	1
3	Sealed cartridge bearing, inside cassette body	1
4	Seal, drive side	1
5	End cap	1
6	End cap	1
7	Internal seal	1
8	Sealed bearing	1
9	C-clamp	1
10	Fixing bolt	1
11	Shim washer	1
12	Hub shell	1
13	Seal, outer cassette body	1

QL-SJ6R / QL-SJ3R

KT TAIWAN 3x1 spline freehub, loose balls



ITEM#	DESCRIPTION	Q'TY
1	Axle set	1
2	Cassette body set	1
3	Rubber seal, drive side	1
4	Seal, non-drive side	1
5	Steel balls	9
6	Rubber seal	1
7	Hub shell	1
8	Seal, outer cassette body	1

REPLACEMENT INSTRUCTION

KT TAIWAN 6X6, 6 PAWLS & 6 SPRINGS, ONE-PIECE DRIVER

- 1 Un-tighten the lock-nut from drive side



- 2 Take off the one-piece driver



- 3 Take the 1sp Freehub Body and slide into the axle



- 4 Threaded the lock-nut in drive side



- 5 Tighten the lock-nut in drive side

KT TAIWAN 6X6, 6 PAWLS & 6 SPRINGS, FREEHUB SYSTEM

- 1 Tighten the lock-nut in disc side



- 2 Un-tighten the lock-nut in drive side



- 3 Take out the Freehub Body



- 4 Slide in the new Freehub Body



- 5 Threaded the lock-nut in drive side



- 6 Tighten the lock-nut in drive side

KT TAIWAN 3X1, 3X3, 4X4, 6X6 PAWLS & SPRING, FREEHUB SYSTEM

- 1 Tighten the alloy end cap in non-drive side



- 2 Un-tighten the alloy end cap from drive side



- 3 Take out the Freehub Body



- 4 Slide in the new Freehub Body



- 5 Threaded the lock-nut in drive side



- 6 Tighten the lock-nut in drive side

REPLACEMENT INSTRUCTION

KT TAIWAN 3X1, 3X3, 4X4, 6X6 RATCHET RING SYSTEM



1 Un-tighten the lock-nut by wrench



2 Take out the Freehub Body



3 Un-tighten the lock-nut by disassembly tool with wrench



4 Take off the lock-nut



5 Put down the hub (disc side) on holding tool (A)



6 Push out the bearing by rubber hammer



7 Put down the axle & bearing to holding tool (A)



8 Push out the bearing by rubber hammer



9 Put the axle inside the hub shell from disc side



10 Push the other bearing out by rubber hammer



11 Put down the hub shell (drive side) onto holding tool (B)



12 Put the axle inside the hub shell



13 Take on bearing onto hub shell (disc side)



14 Take the holding tool (C) onto the bearing (disc side)



15 Install the bearing with rubber hammer



16 Put down the hub on holding tool (C)



17 Take one bearing on the axle (drive side)



18 Take the holding tool (B) onto the bearing (drive side)



19 Install the bearing with rubber hammer



20 Take the other bearing for drive side



21 Take the holding tool (B) onto the bearing (drive side)



22 Threaded the alloy end cap (disc side) onto axle



23 Slide the new Freehub Body inside the axle



24 Threaded the lock-nut (drive side)



25 Tighten the lock-nut (drive side) with wrench

REPLACEMENT INSTRUCTION

KT TAIWAN 6 PAWLS & 6 SPRINGS SYSTEM



1 Un-tighten lock-nut from non-drive side



2 Take off the lock-nut



3 Un-tighten lock-nut from drive side



4 Take off the lock-nut



5 Take out the Freehub Body



6 Put down the hub on holding tool (A)



7 Push out the bearing out of the freehub by rubber hammer



8 Take off the bearing and axle



9 Put the axle down to the holding tool (A)



10 Push out the bearing from the axle by rubber hammer



11 Put the hub shell onto holding tool (B)



12 Put the axle inside the hub shell



13 Put the bearing on non-drive side



14 Put the holding tool (C) onto the bearing



15 Install the bearing with rubber hammer



16 Put down the hub (non-drive side) on holding tool (C)



17 Put the bearing



18 Put the holding tool (B) onto the axle and bearing



19 Install the bearing with rubber hammer



20 Put the shim washer above the bearing in drive side



21 Take the new Freehub Body



22 Slide the new Freehub Body into the axle



23 Take the seal and push it into hub shell (non drive side)



24 Threaded the end nut from non-drive side



25 Tighten the alloy end cap (non-drive side) with force 100kgf.cm by allen key



26 Threaded the alloy end cap in drive side



27 Tighten the alloy end caps in drive side with force 120kgf.cm by allen key



PRODUCTION TRACEABILITY ON EACH TAIWAN MADE HUB:

1902-4W8 M R-100

YEAR

WEEK

MODEL NO.

DRIVER

F/R

NUMBER

3X3 4X4 FREEHUB SYSTEM

Rotated push the cassette into hubshell (rotation must be anticlockwise), to avoid the waterproof seal deformation.

